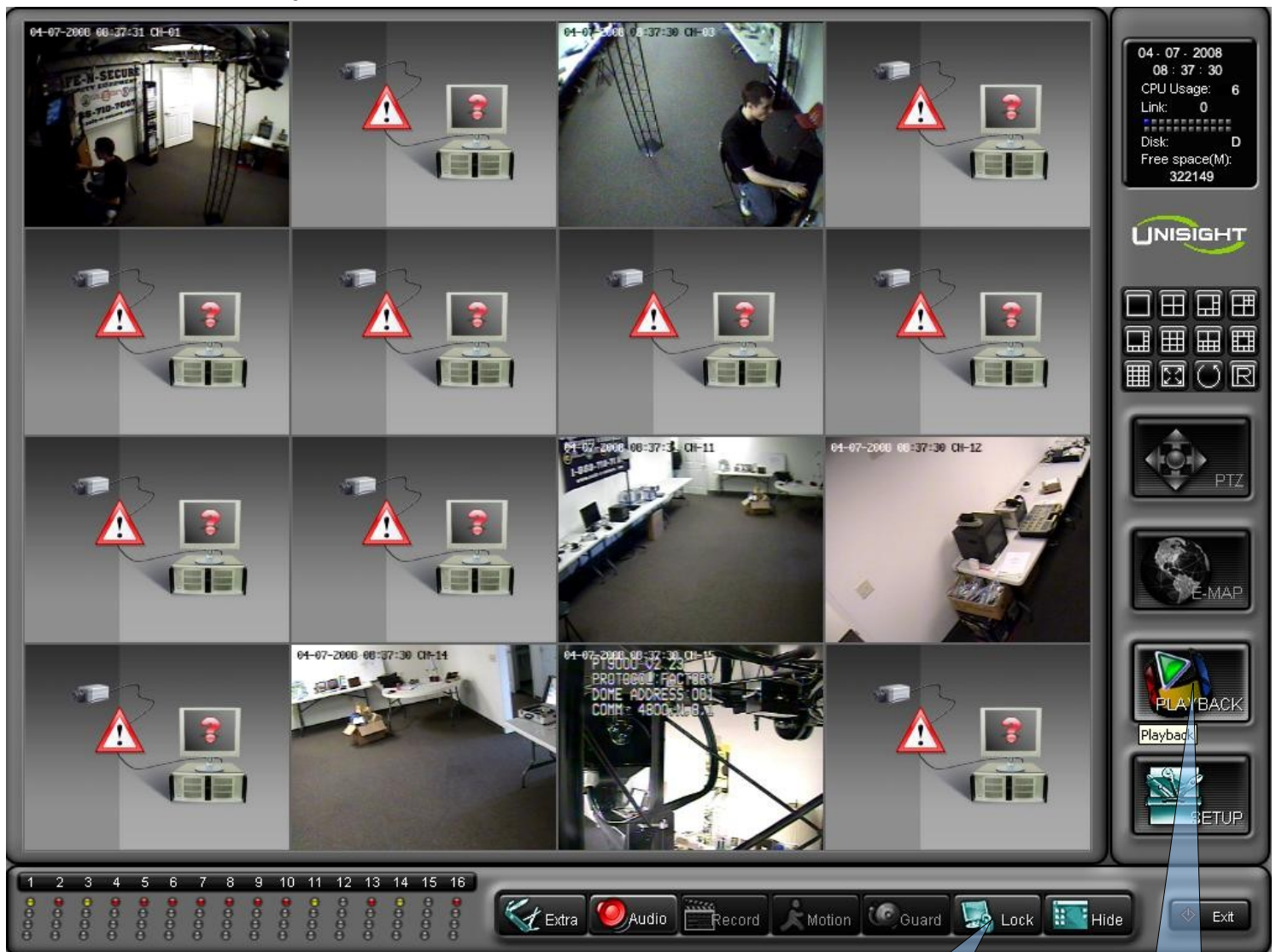


Performing a backup with a TNZ DVR

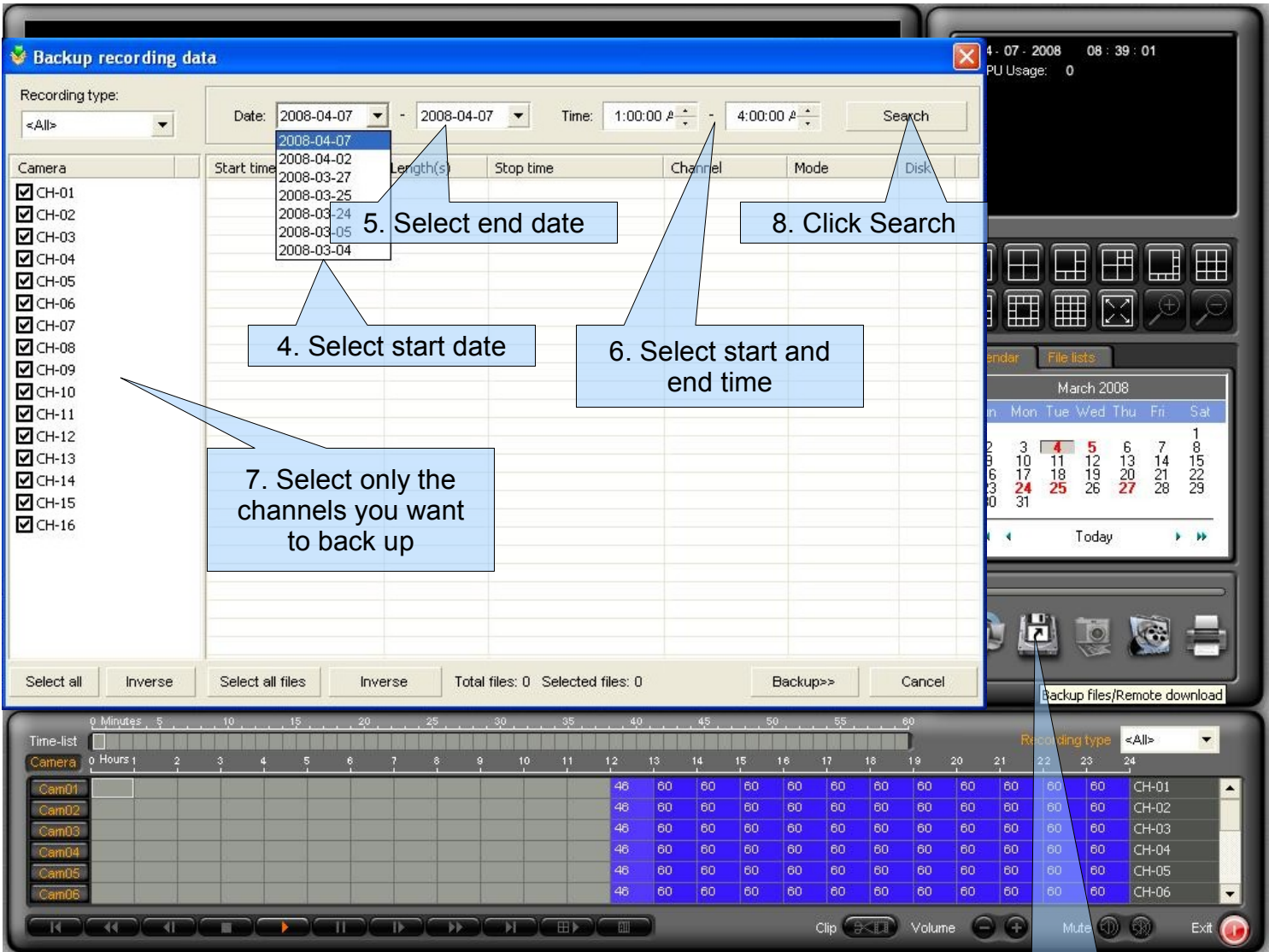
Entering Playback Mode

1. If the Playback button is grayed out, unlock the system by clicking on the lock/unlock button and entering your user name and password.
2. Click the playback button.



Lock/Unlock

Playback



4. Select start date

5. Select end date

6. Select start and end time

7. Select only the channels you want to back up

8. Click Search

3. Select Backup

Backup recording data

Recording type: <All>

Date: 2008-03-24 - 2008-03-24 Time: :00:00 PM - 2:15:01 F Search

Camera	Start time	Length(s)	Stop time	Channel	Mode	Disk
<input checked="" type="checkbox"/> CH-01	2008-03-24 14:02:01	17s	2008-03-24 14:02:19	CH-14	Motion	D:\
<input checked="" type="checkbox"/> CH-02	2008-03-24 14:04:59	16s	2008-03-24 14:05:16	CH-14	Motion	D:\
<input checked="" type="checkbox"/> CH-03	2008-03-24 14:04:57	20s	2008-03-24 14:05:18	CH-11	Motion	D:\
<input checked="" type="checkbox"/> CH-04	2008-03-24 14:04:55	22s	2008-03-24 14:05:18	CH-15	Motion	D:\
<input checked="" type="checkbox"/> CH-05	2008-03-24 14:07:06	16s	2008-03-24 14:07:23	CH-14	Motion	D:\
<input checked="" type="checkbox"/> CH-06	2008-03-24 14:07:27	11s	2008-03-24 14:07:39	CH-14	Motion	D:\
<input checked="" type="checkbox"/> CH-07	2008-03-24 14:07:18	22s	2008-03-24 14:07:41	CH-11	Motion	D:\
<input checked="" type="checkbox"/> CH-08	2008-03-24 14:07:28	12s	2008-03-24 14:07:41	CH-15	Motion	D:\
<input checked="" type="checkbox"/> CH-09	2008-03-24 14:11:39	20s	2008-03-24 14:12:00	CH-14	Motion	D:\
<input checked="" type="checkbox"/> CH-10	2008-03-24 14:12:10	12s	2008-03-24 14:12:23	CH-14	Motion	D:\
<input checked="" type="checkbox"/> CH-11	2008-03-24 14:13:53	22s	2008-03-24 14:14:16	CH-14	Motion	D:\
<input checked="" type="checkbox"/> CH-12	2008-03-24 14:14:01	15s	2008-03-24 14:14:17	CH-11	Motion	D:\
<input checked="" type="checkbox"/> CH-13	2008-03-24 14:14:04	12s	2008-03-24 14:14:17	CH-15	Motion	D:\
<input checked="" type="checkbox"/> CH-14	2008-03-24 14:13:53	24s	2008-03-24 14:14:18	CH-09	Motion	D:\
<input checked="" type="checkbox"/> CH-15	2008-03-24 14:14:07	11s	2008-03-24 14:14:19	CH-12	Motion	D:\
<input checked="" type="checkbox"/> CH-16	2008-03-24 14:14:37	14s	2008-03-24 14:14:52	CH-11	Motion	D:\
	2008-03-24 14:14:33	18s	2008-03-24 14:14:52	CH-15	Motion	D:\
	2008-03-24 14:14:36	16s	2008-03-24 14:14:53	CH-14	Motion	D:\
	2008-03-24 14:14:58	12s	2008-03-24 14:15:11	CH-14	Motion	D:\
	2008-03-24 14:14:59	13s	2008-03-24 14:15:13	CH-11	Motion	D:\
	2008-03-24 14:14:59	13s	2008-03-24 14:15:13	CH-15	Motion	D:\

Select all Inverse Select all files Inverse Total files: 21 Selected files: 0

Backup>> Cancel

9. Select multiple files by holding down the CTRL key and clicking on the files you want.

10. Click Backup

008

Thu	Fri	Sat
3	4	5
10	11	12
17	18	19
24	25	26



<All>

- CH-01
- CH-02
- CH-03
- CH-04
- CH-05
- CH-06

Backup recording data

Recording type: <All>

Camera: CH-01 to CH-16 (all checked)

Files backup manager

File backup

Label: test

Buttons: Backup >>, Backup tools>>, USB devices>>, Exit

11. Name your Backup and select backup.

Start	Duration	End	Channel	Type	Disk
2008-03-24 14:07:18	22s	2008-03-24 14:07:41	CH-11	Motion	D:\
2008-03-24 14:07:28	12s	2008-03-24 14:07:41	CH-15	Motion	D:\
2008-03-24 14:11:39	20s	2008-03-24 14:12:00	CH-14	Motion	D:\
2008-03-24 14:12:10	12s	2008-03-24 14:12:23	CH-14	Motion	D:\
2008-03-24 14:13:53	22s	2008-03-24 14:14:16	CH-14	Motion	D:\
2008-03-24 14:14:01	15s	2008-03-24 14:14:17	CH-11	Motion	D:\
2008-03-24 14:14:04	12s	2008-03-24 14:14:17	CH-15	Motion	D:\
2008-03-24 14:13:53	24s	2008-03-24 14:14:18	CH-09	Motion	D:\
2008-03-24 14:14:07	11s	2008-03-24 14:14:19	CH-12	Motion	D:\
2008-03-24 14:14:37	14s	2008-03-24 14:14:52	CH-11	Motion	D:\
2008-03-24 14:14:33	18s	2008-03-24 14:14:52	CH-15	Motion	D:\
2008-03-24 14:14:36	16s	2008-03-24 14:14:53	CH-14	Motion	D:\
2008-03-24 14:14:58	12s	2008-03-24 14:15:11	CH-14	Motion	D:\
2008-03-24 14:14:59	13s	2008-03-24 14:15:13	CH-11	Motion	D:\
2008-03-24 14:14:59	13s	2008-03-24 14:15:13	CH-15	Motion	D:\

Select all Inverse Select all files Inverse Total files: 21 Selected files: 8 Backup>> Cancel

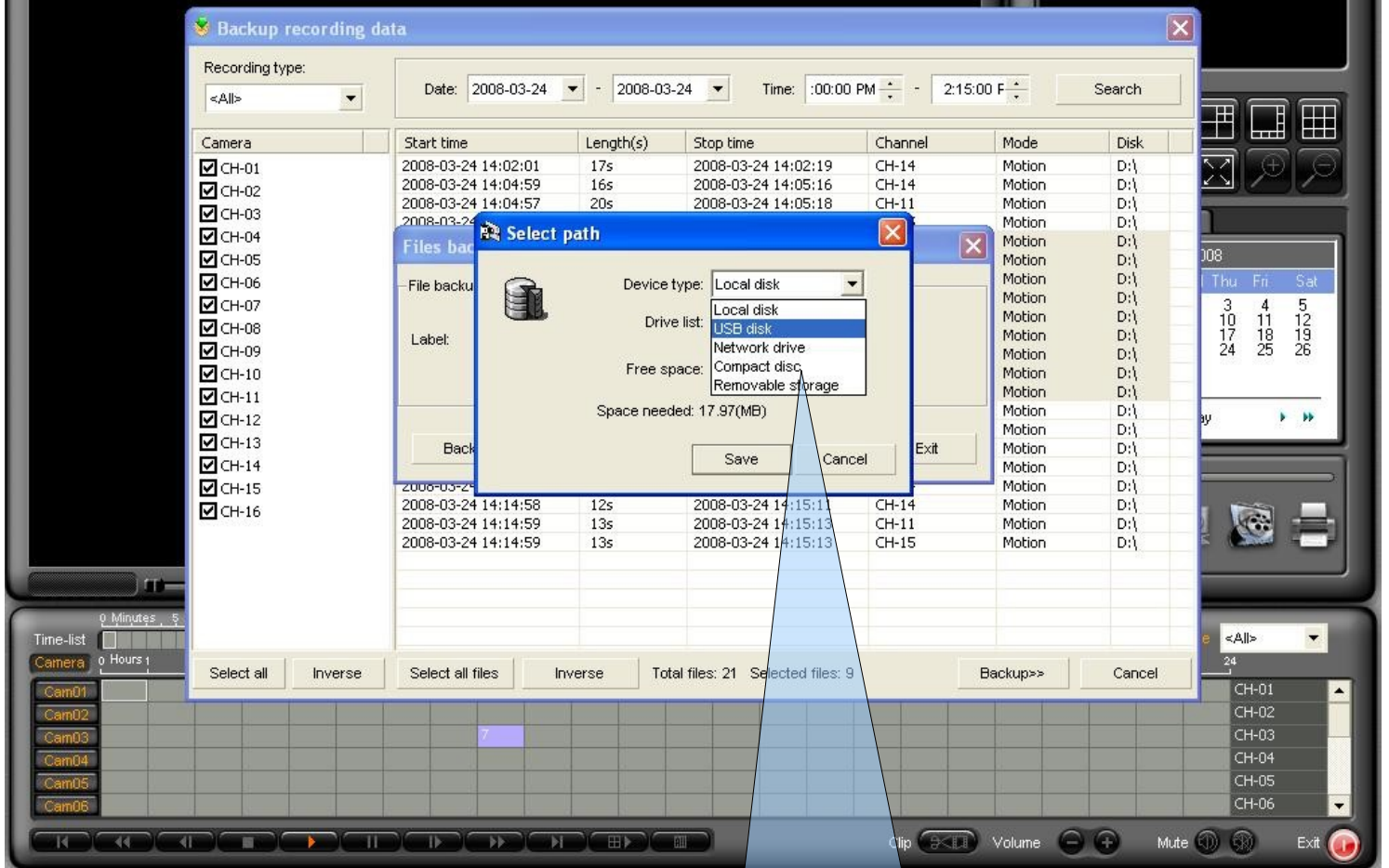
Time-list 0 Minutes

Camera 0 Hours

Cam01 Cam02 Cam03 Cam04 Cam05 Cam06

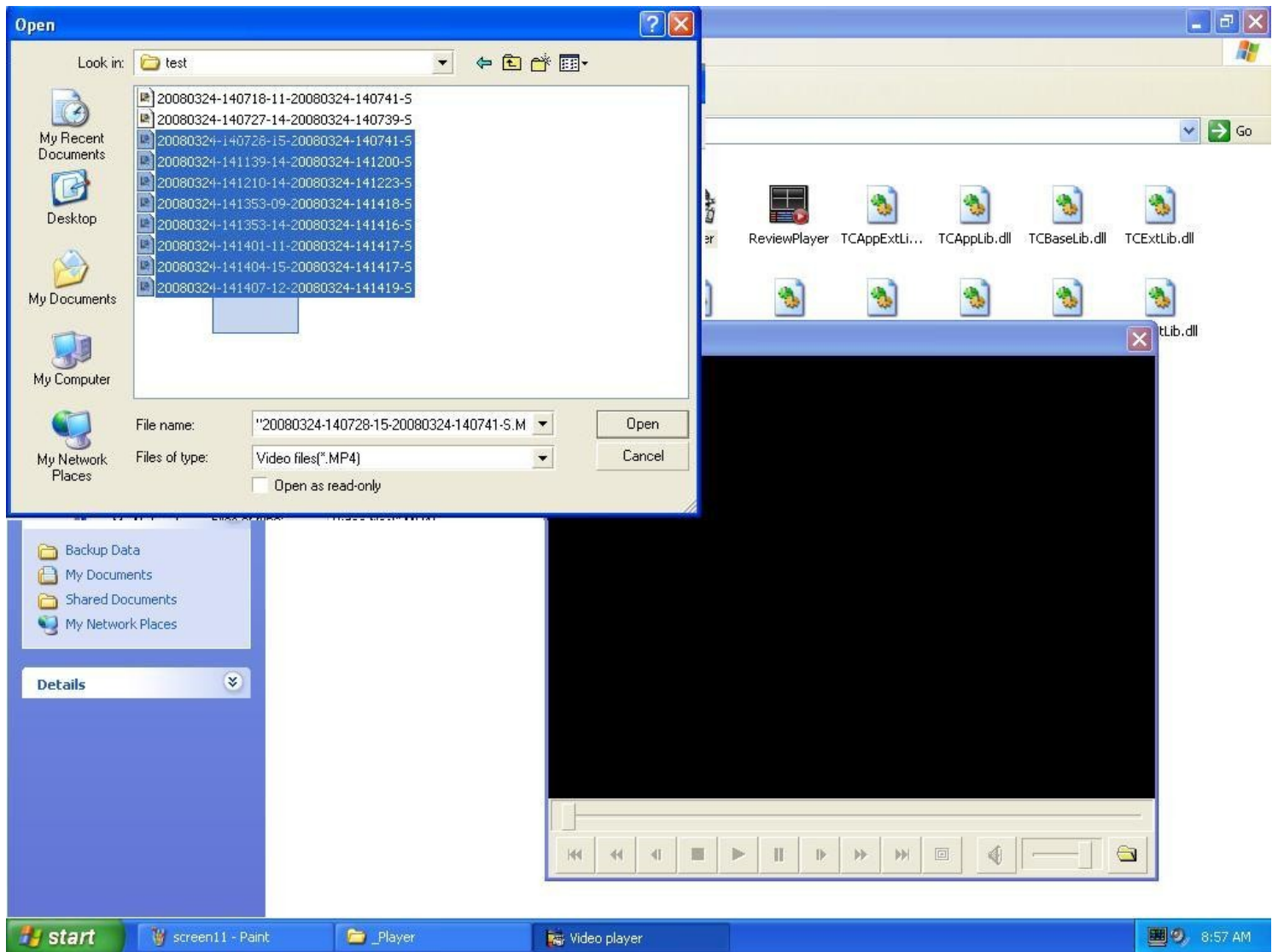
CH-01 CH-02 CH-03 CH-04 CH-05 CH-06

Clip Volume Mute Exit



12. Select the media you want to backup to and select Save.

Playback From CD



1. Browse to the CD
2. Double-click Backup Files
3. Double-click _Player
4. Double-click player
5. Click the open icon (lower-right corner)
6. browse to the Backup Data folder and double-click your backup file
7. Select the file(s) you want to playback (using the aforementioned CTRL key method).