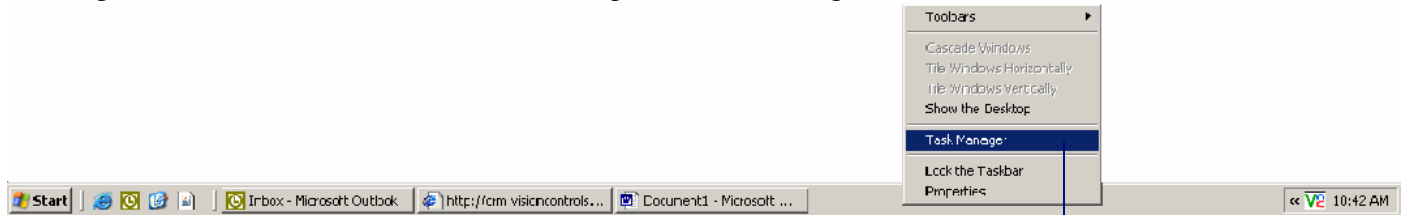


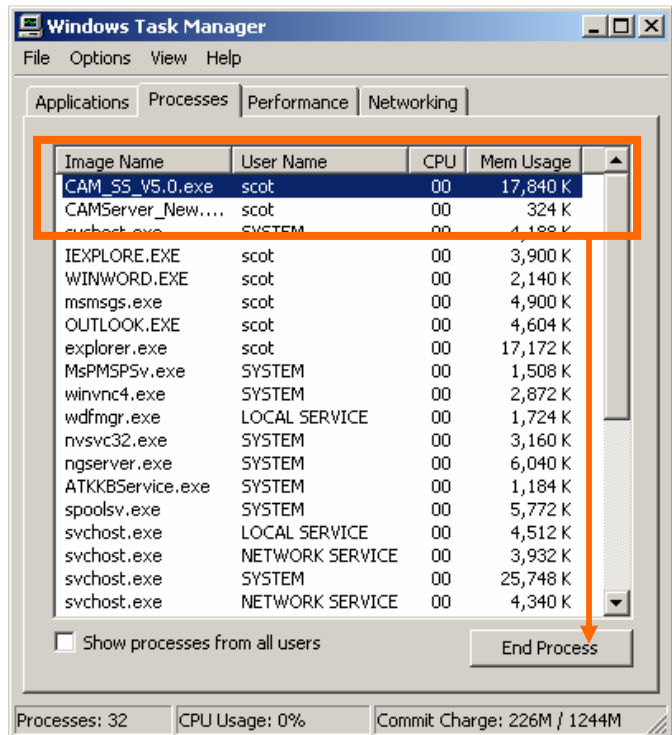
## To upgrade the CAM software:

First make sure to download all the necessary drivers and setup files from our website, [www.visioncontrols.net](http://www.visioncontrols.net).

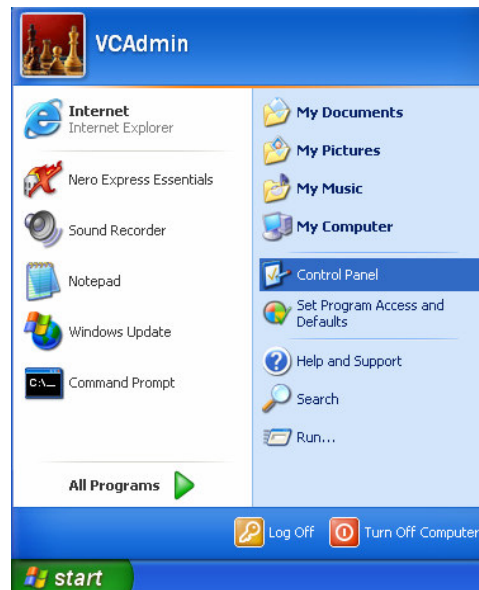
Make sure that both the CAM software and the CAM Server is closed out. This can be checked by right clicking the main Windows toolbar and clicking on “Task Manager”.



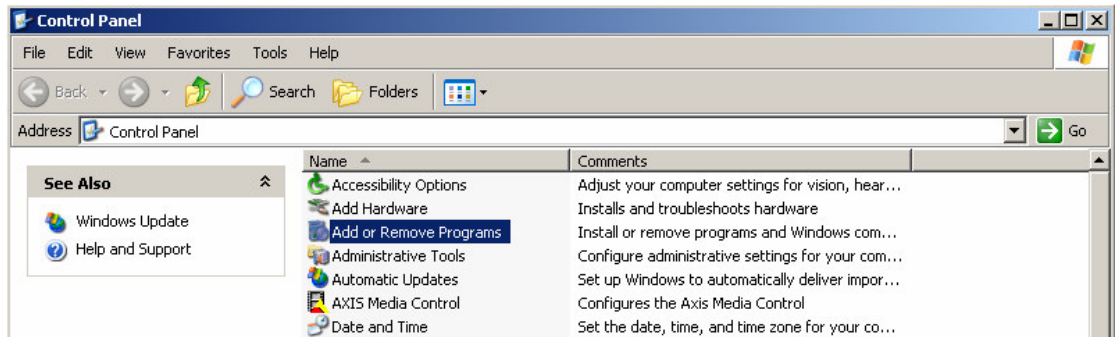
Click on the “Processes” tab and select anything that says “CAM” in the name and click on the “End Process” button. When both the CAM software and CAM server is ended close out of the Task Manager.



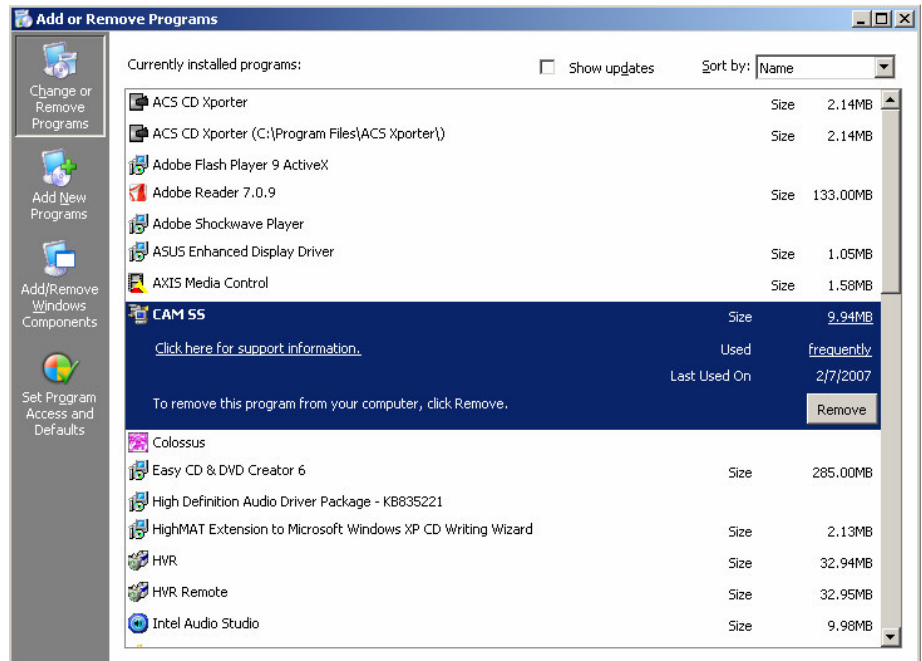
Go to Start and click on “Control Panel”.



Double-click on “Add or Remove Programs”.



Select CAM SS or MP and click “Remove”. (This will remove both the CAM software and CAM Server programs)  
When this is finished close the window.

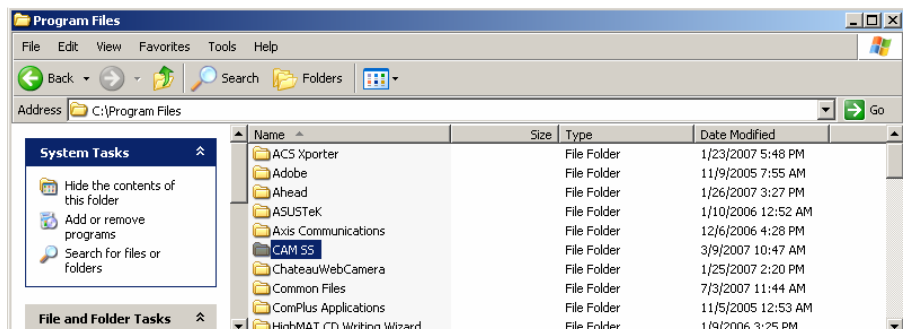


Open the “My Computer” window and double-click on “Local Disk (C:)”. Then open the “Program Files” folder.

Name	Type	Total Size	Free Space
<b>Hard Disk Drives</b>			
Local Disk (C:)	Local Disk	37.2 GB	15.7 GB
Local Disk (E:)	Local Disk	279 GB	197 GB

Name	Size	Type	Date Modified
d20070115		File Folder	2/1/2007 9:22 AM
Database		File Folder	1/10/2006 1:22 AM
Documents and Settings		File Folder	1/25/2007 10:27 AM
MSOCache		File Folder	11/8/2005 5:56 PM
Program Files		File Folder	7/10/2007 2:40 PM
RECYCLER		File Folder	1/25/2007 10:34 AM
Source Files		File Folder	3/7/2007 5:34 PM

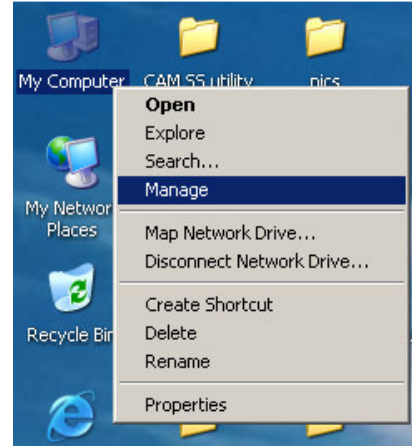
Click once on CAM SS or MP to select it, then hit the delete button to delete the folder. After this is done close the window.



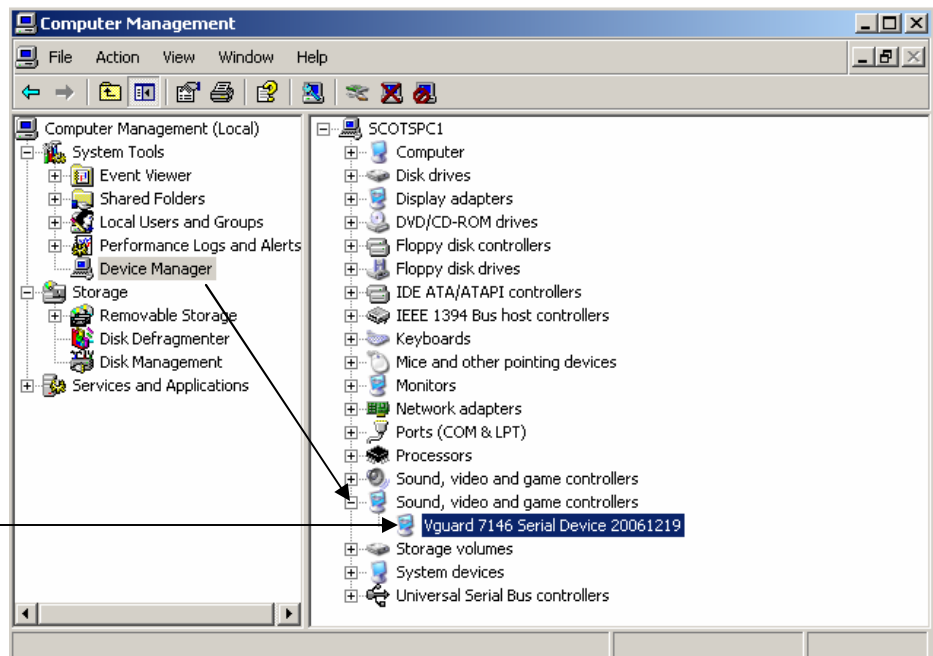
## Installing the drivers:

*(Drivers only need to be installed on the DVR itself, not on remote clients)*

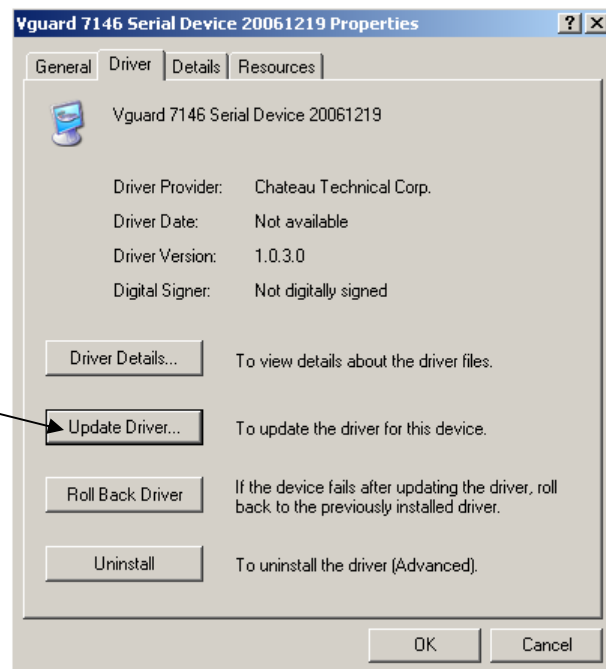
Right-click on “My Computer” and click on “Manage”.



Click on “Device Manager”.  
When the list on the right appears click on the plus sign next to “Sound, video and game controllers” (the second one). Then double-click on the first driver in the list, in this case “Vguard7146 Serial Device”.  
(Do this for each driver shown in the list under “Sound, video and game controllers”)



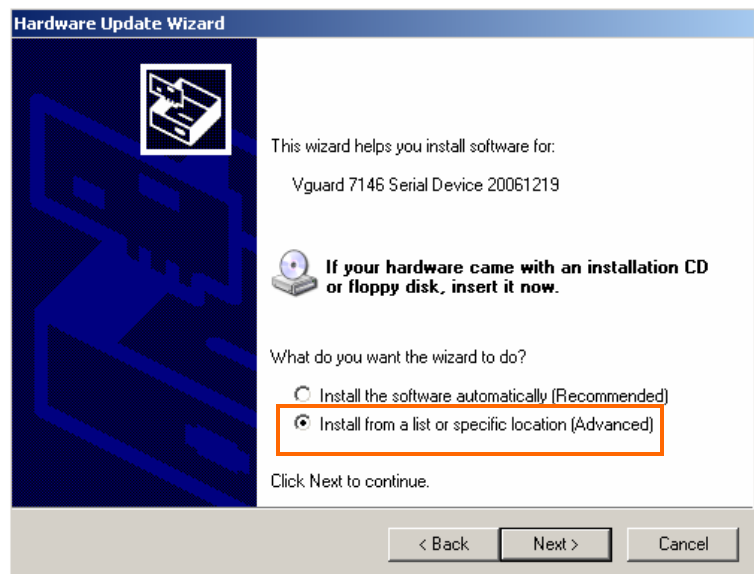
Click on the “Driver” tab followed by the “Update Driver” button.



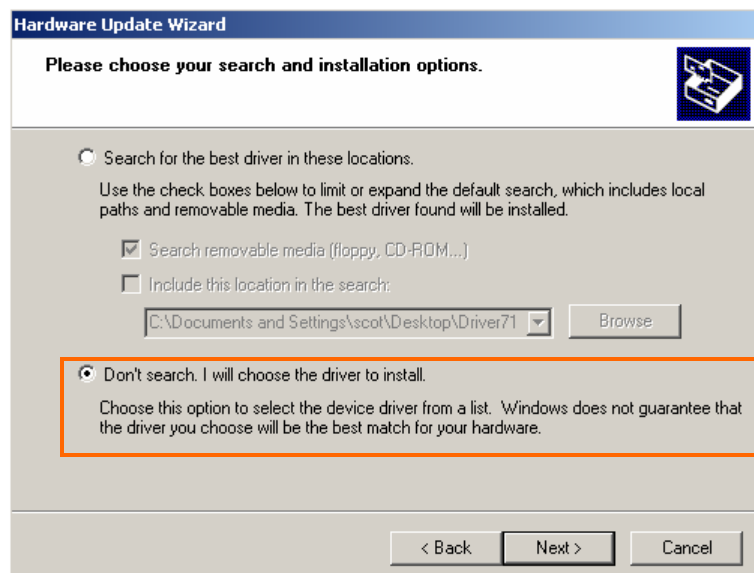
Select “No, not this time” and click “Next”.



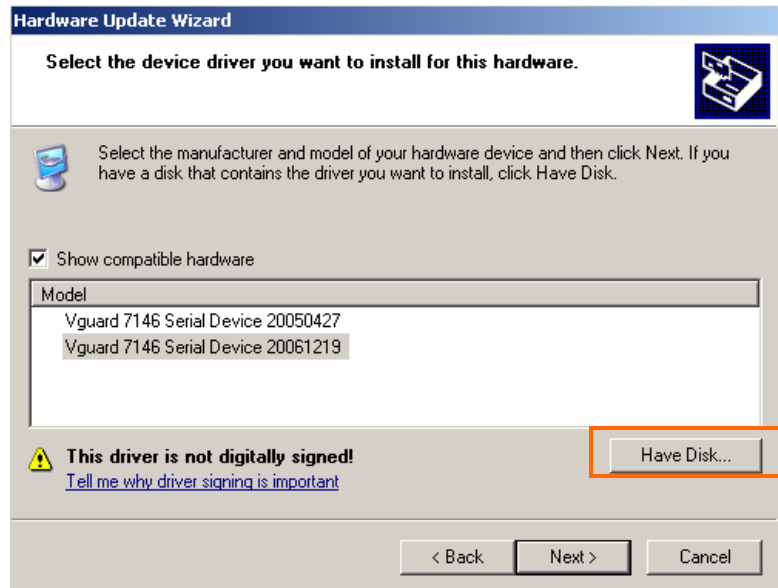
Select “Install from a list or specific Location (advanced)”.



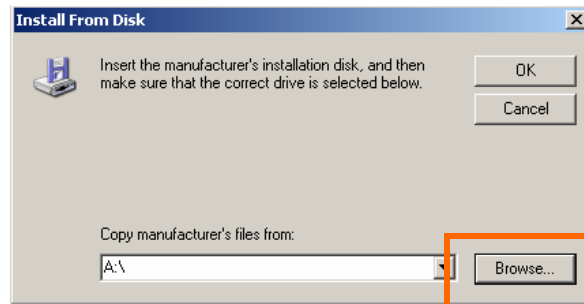
Select “Don't search...” and click “Next”.



Click on the “Have Disk” button.

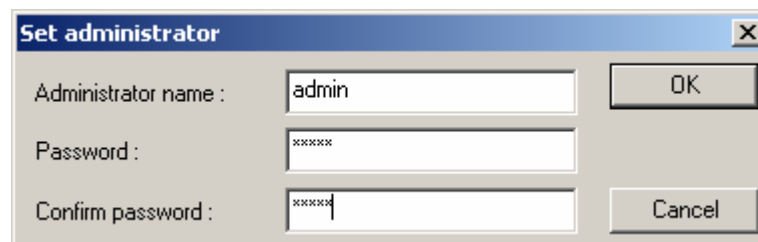


Click on the “Browse” button and seek out the newest drivers. (The driver folder will be where ever you saved it to and the driver will be a “\_\_\_.inf” file) When you find the correct driver double-click the file and then hit the “OK” button followed by the “Next” button. After this click “Finish”. Then close out the remaining windows.



Now run the “Setup.exe” file to install the CAM software. Just follow the directions to install the CAM software, CAM Server and DVR Player. When finished reboot the PC.

When Windows loads back up the CAM software will automatically start and ask you to designate an administrative username and password. When installing on the DVR itself we recommend using username: admin and password: admin. (When upgrading the CAM software on a remote client we recommend using the username and passwords that coincide with what that person would use on the DVR)

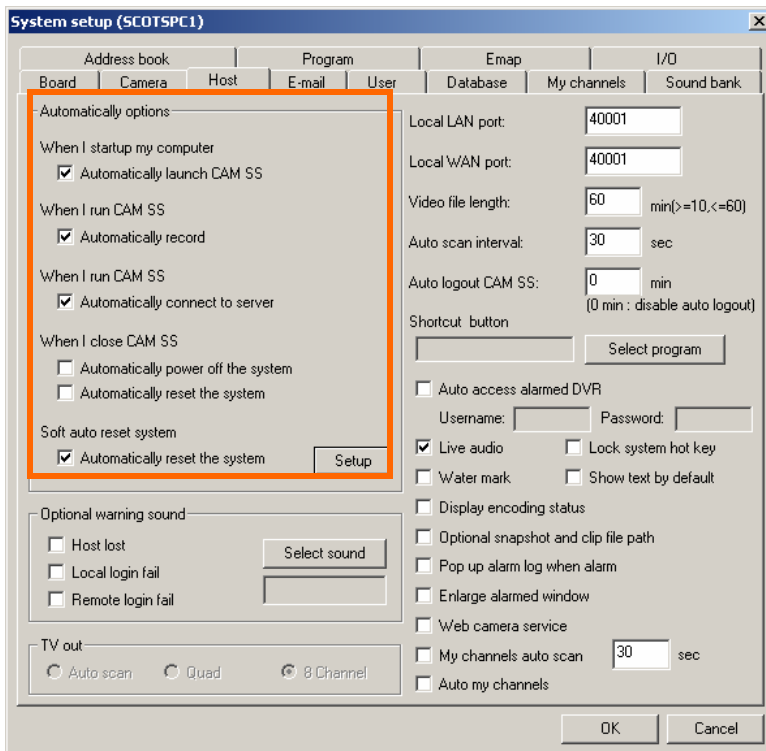


Click on the function panel button to open up the advanced controls section.



Click on the SET button.

When the “System setup” window opens, click on the “Host” tab.



When upgrading on the DVR make sure that these boxes **are** checked:

- Automatically launch CAM SS or MP
- Automatically record
- Automatically connect to server
- Automatically reset the system (Click on the “Setup” button to adjust the time and day that the DVR will automatically reboot)

When upgrading on a remote client PC you will want “Automatically connect to server” as the **only** box that is checked.

When finished with these settings click “OK”.

Now click on the Power button to close the CAM software.



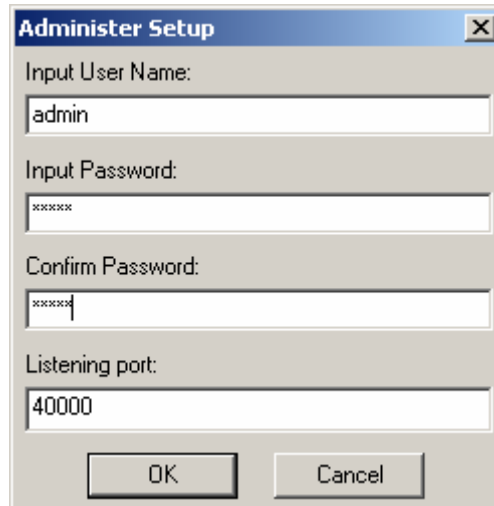
## Setting up the CAM SERVER:

*(This is only needed on the DVR, when installing CAM software on remote client PC just delete the shortcut)*



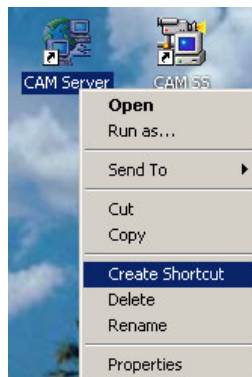
Double-click on the CAM Server icon to open the CAM Server.

The CAM Server will ask you to designate a username and password. We recommend you use admin/admin. The “Listening port:” should be set at 40000.

The image shows a dialog box titled 'Administer Setup'. It has four input fields: 'Input User Name:' with 'admin' entered, 'Input Password:' with 'xxxxxx' entered, 'Confirm Password:' with 'xxxxxx' entered, and 'Listening port:' with '40000' entered. At the bottom, there are 'OK' and 'Cancel' buttons.

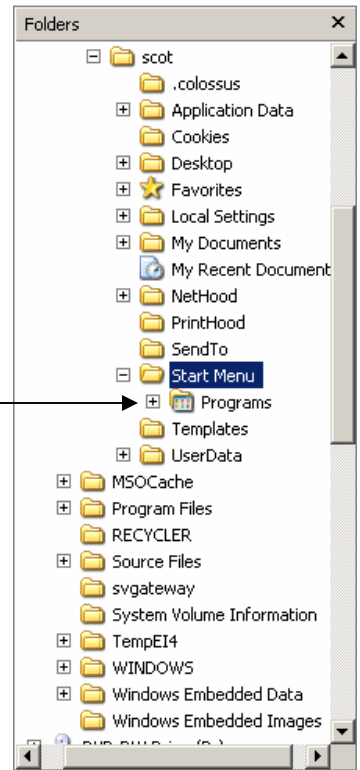
When you click “OK” and the CAM Server opens you can just leave it be.  
(The CAM Server should be running at all times behind the CAM software)

Right-click on the CAM Server icon and click “Create shortcut” to make a duplicate icon.  
Do the same with the CAM SS or CAM MP icon.

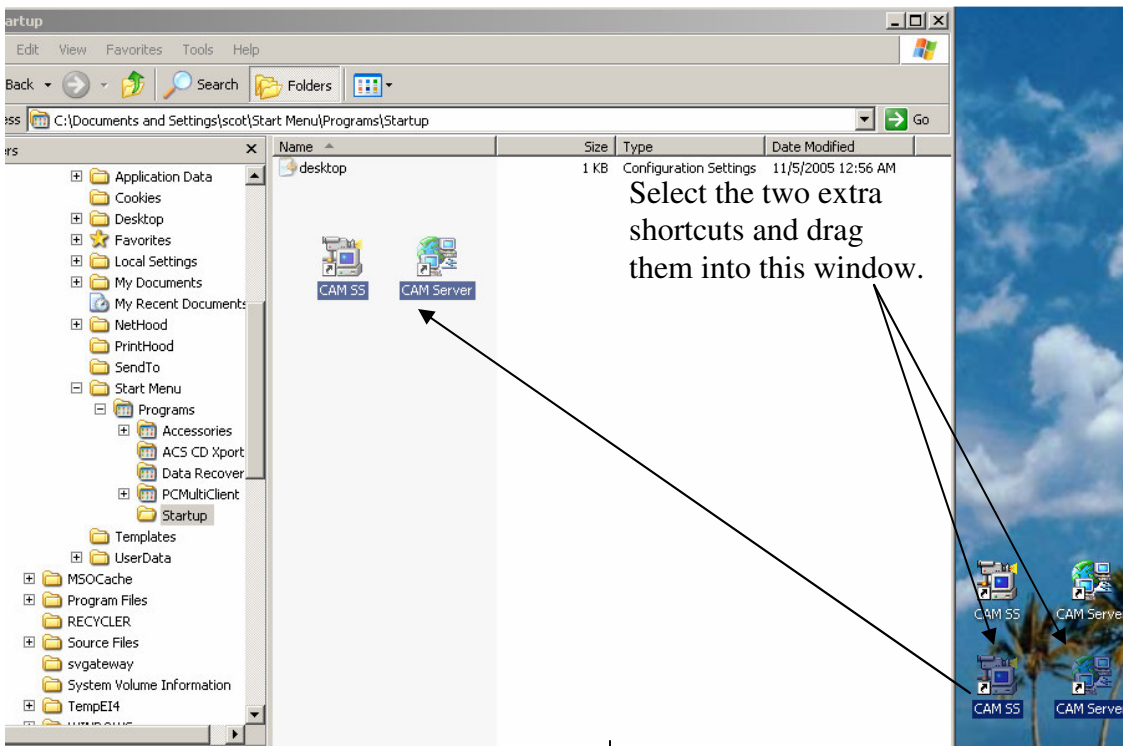
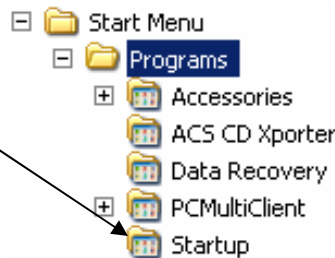


When you have two of each icon, right-click on the “Start” button and click “Explore”.

Using the list on the left, click on the Plus sign next to “Programs” to bring up the “Startup” folder.



Click on the “Startup” folder.



Name	Size	Type	Date Modified
desktop	1 KB	Configuration Settings	11/5/2005 12:56 AM
CAM SS	2 KB	Shortcut	7/12/2007 9:13 AM
CAM Server	2 KB	Shortcut	7/12/2007 9:13 AM

When both the files are listed in this window you can close the window out and reboot the DVR.

For further installation information refer to the CAM Line Install Guide v5.11.